

---

# Spectral Coexistence Challenges Between DOCSIS 3.1 Cable Broadband and 900 MHz ISM Wireless Networks

*Implications for Utilities, MSOs, and Critical Infrastructure*



Paulo Sigrist, Product Director  
CelPlan Technologies



Images created by AI

## Executive Summary

The expansion of cable broadband networks to DOCSIS 3.1 and beyond has introduced a systemic spectral coexistence challenge with wireless systems operating in the 902–928 MHz ISM band. This band is heavily utilized by Advanced Metering Infrastructure (AMI 2.0), distribution automation, and other critical utility communications.

Unlike earlier DOCSIS generations, DOCSIS 3.1 employs wideband Orthogonal Frequency Division Multiplexing (OFDM) and extends downstream operations up to 1.2 GHz and beyond. This places high-power, continuous broadband signals directly within the operational spectrum of unlicensed wireless utility networks. When cable plant shielding integrity degrades—as inevitably occurs in aging hybrid fiber-coaxial (HFC) infrastructure—these signals escape confinement and act as dominant interferers.

The resulting interference is not merely a performance issue. It creates operational blind spots, increases latency in outage detection, destabilizes wireless mesh routing, and introduces systemic risk to grid reliability. This white paper examines the technical mechanisms behind this conflict, explains why traditional mitigation approaches are insufficient, and proposes a multi-layered strategy for sustainable coexistence.

## Introduction

Modern critical infrastructure increasingly depends on high-capacity communications systems that were originally designed for fundamentally different purposes. Cable broadband networks, optimized for residential and commercial data delivery, now coexist physically and spectrally with wireless utility

communications that support grid monitoring, control, and public safety functions. The convergence of these systems has exposed previously latent interference mechanisms, particularly in the 900 MHz band.

At the center of this issue is the evolution of the Data Over Cable Service Interface Specification (DOCSIS), the global standard governing broadband data transmission over hybrid fiber-coaxial (HFC) networks. DOCSIS was originally developed to deliver high-speed internet and video services using a closed, shielded coaxial medium, with the implicit assumption that RF energy would remain confined within the cable plant.

### **Overview of DOCSIS Technology**

DOCSIS defines the physical (PHY) and media access control (MAC) layers that enable packetized data transmission over cable television infrastructure. Early versions of DOCSIS were designed around:

- Narrowband, fixed-frequency QAM carriers
- Limited spectral reach
- Modest throughput requirements

These design assumptions minimized interaction with over-the-air wireless systems, as cable spectrum usage remained largely below 860 MHz and relied on discrete channels that were relatively easy to manage and isolate.

### **Evolution of DOCSIS Versions**

The progressive evolution of DOCSIS has dramatically altered its RF footprint and interference potential:

#### ***DOCSIS 1.0 / 1.1 (Late 1990s):***

Enabled basic high-speed data services using 6 MHz QAM channels, primarily below 750 MHz. Interference considerations were largely confined to ingress noise affecting upstream performance.

#### ***DOCSIS 2.0:***

Improved upstream modulation efficiency and robustness but maintained similar spectral boundaries and narrowband characteristics.

#### ***DOCSIS 3.0:***

Introduced channel bonding, aggregating multiple 6 MHz QAM carriers to increase throughput. While downstream spectrum extended toward 860 MHz, signals remained discrete and spectrally predictable.

#### ***DOCSIS 3.1:***

Represented a fundamental architectural shift. It replaced single-carrier QAM with wideband Orthogonal Frequency Division Multiplexing (OFDM) downstream and OFDMA upstream. Downstream spectrum expanded to 1.2 GHz, and in some deployments higher. This expansion directly overlaps the 902–928 MHz ISM band, introducing sustained, broadband RF energy into frequencies heavily used by unlicensed wireless systems.

#### ***DOCSIS 4.0 and Extended Spectrum DOCSIS (ESD):***

Further extend usable spectrum up to 1.8 GHz, increase symmetry, and raise RF density within the HFC plant, intensifying coexistence challenges unless shielding and leakage control are significantly improved.

### **Emerging Coexistence Challenge**

DOCSIS 3.1 and beyond were engineered under the assumption of a well-contained transmission medium, where shielding effectiveness and connector integrity prevent meaningful radiation. In parallel, wireless utility networks operating in the 900 MHz ISM band were designed under the assumption of a stochastic noise environment, not persistent high-power broadband interference.

As these two assumptions collide in shared physical space—on poles, in pedestals, and at customer premises—the result is a new class of interference that cannot be fully addressed by legacy RF planning, regulatory frameworks, or maintenance practices. This paper examines that collision in detail and outlines the technical, operational, and regulatory implications of DOCSIS-wireless coexistence in the modern RF environment.

---

## Spectral Overlap as the Root Condition

The coexistence challenge originates in the expansion and densification of the DOCSIS spectrum. Earlier DOCSIS generations operated using discrete 6 MHz QAM carriers, typically below 860 MHz, with limited interaction with the 902–928 MHz ISM band. Interference events were therefore episodic and generally attributable to localized shielding defects.

DOCSIS 3.1 fundamentally altered this paradigm by introducing wideband OFDM blocks up to 192 MHz and extending downstream operation to 1.2 GHz. This expansion places the entire 902–928 MHz ISM band within the active downstream allocation. Unlike legacy narrowband carriers, OFDM distributes energy continuously across thousands of subcarriers, creating a broadband emission profile whose spectral density remains elevated even when portions are notched.

DOCSIS 4.0 further increases RF density through Extended Spectrum operation to 1.8 GHz and greater upstream/downstream symmetry. Although it does not introduce new ISM overlap, it reduces tolerance for shielding imperfections and increases aggregate RF energy available at any defect point.

The net effect is structural: cable systems now occupy spectrum that was historically external to the cable RF envelope, transforming coexistence from an anomaly into a predictable engineering condition.

## Signal Power Asymmetry and Its Consequences

The severity of interference is driven not only by spectral overlap but by extreme signal power asymmetry. Cable distribution amplifiers routinely operate at +50 to +54 dBmV, while AMI receivers function near –110 to –120 dBm sensitivity. This differential exceeds 150 dB, meaning minute leakage fractions can dominate the wireless noise floor.

Leakage occurs when shielding discontinuities form unintended radiators. In DOCSIS 3.1 and 4.0 systems, OFDM waveforms with high peak-

to-average power ratios excite these discontinuities with broadband energy, increasing the likelihood of radiation and spectral regrowth due to nonlinear behavior.

Ingress operates in the reverse direction when ISM transmissions couple into compromised plant segments. In high-split and Full Duplex architectures, upstream vulnerability increases due to tighter spectral adjacency and higher linearity sensitivity.

What were once isolated compliance defects must now be understood as system-level electromagnetic exposure points.

## Bidirectional Interference Mechanisms

Leakage-induced interference does not remain confined to the physical layer. In wireless mesh networks, elevated noise floors reduce effective link margins, increasing packet error rates and retransmissions. Routing protocols respond dynamically, increasing hop counts and causing route instability. These changes introduce latency variability and airtime congestion.

In cable networks, ingress manifests as upstream noise that can trigger adaptive modulation shifts, scheduling instability, and node-wide throughput degradation. Nonlinear mixing within plant components can create distortion products that complicate root-cause analysis.

The asymmetry in tolerance between DOCSIS and wireless systems masks failures on one side while amplifying them on the other, obscuring early detection and extending resolution timelines.

## OFDM-Specific Amplification of the Coexistence Problem

The transition from single-carrier QAM modulation to Orthogonal Frequency Division Multiplexing (OFDM) in DOCSIS 3.1 and DOCSIS 4.0 fundamentally alters the electromagnetic behavior of the cable plant. While spectral overlap establishes the conditions for coexistence challenges, specific properties of OFDM materially amplify both the probability and severity of interference when shielding

integrity degrades. These waveform characteristics transform what would otherwise be localized impairments into persistent, broadband, and often difficult-to-diagnose interference mechanisms.

One of the most significant contributors is the high Peak-to-Average Power Ratio (PAPR) inherent in OFDM signals. Because OFDM consists of thousands of independently modulated subcarriers summed in the time domain, instantaneous signal peaks can significantly exceed the average power level. In practical cable deployments, this forces amplifiers and active components to operate closer to their linearity limits. Even when systems are properly engineered, environmental factors such as temperature variation, aging components, or minor impedance mismatches can push devices into mild compression. When nonlinear behavior occurs, intermodulation products and spectral regrowth extend beyond nominal channel boundaries. The result is a broader effective emission bandwidth and elevated out-of-band energy, increasing the likelihood that leaked signals will encroach upon sensitive wireless receivers operating in the 902–928 MHz ISM band.

A second amplifying factor is the continuous spectral occupancy characteristic of DOCSIS OFDM blocks. Unlike legacy narrowband carriers, which occupied discrete frequency slots with guard spacing, OFDM distributes energy densely across wide contiguous bandwidths that may span up to 192 MHz. From the perspective of a nearby wireless device, leaked OFDM energy appears as a sustained broadband noise source rather than a set of isolated interferers. Wireless mitigation strategies such as frequency hopping, adaptive channel selection, or temporal packet scheduling depend on the presence of spectral or temporal gaps. Continuous OFDM occupancy effectively removes these gaps, reducing the effectiveness of standard coexistence techniques and increasing packet error probability even when signal levels remain within nominal margins.

A third and less visible amplification mechanism arises from advanced forward error correction and adaptive modulation within DOCSIS systems. DOCSIS 3.1 and 4.0 employ Low-Density Parity-Check (LDPC) coding and dynamic profile management to maintain throughput under degraded conditions. This robustness allows cable systems to continue operating acceptably even in the presence of moderate ingress or distortion. However, this tolerance masks underlying shielding or linearity defects that may already be radiating broadband energy into adjacent wireless environments. While the cable network compensates internally through coding gain and modulation adjustments, nearby wireless mesh nodes—operating with far smaller link budgets and without equivalent coding gain—may experience severe degradation. This asymmetry shifts interference from an obvious service outage within the cable domain to a silent impairment affecting external wireless infrastructure.

The combined effect of high PAPR, continuous spectral occupancy, and internal error-correction masking creates a failure mode that is persistent yet difficult to detect using legacy diagnostic approaches. Leakage may not produce dramatic degradation in DOCSIS key performance indicators, yet it can steadily elevate the local noise floor experienced by wireless systems. Because the interference resembles broadband noise rather than discrete carriers, it is often misinterpreted as environmental congestion or generalized RF pollution.

In this context, OFDM does not merely increase bandwidth efficiency; it increases electromagnetic coupling sensitivity and reduces natural coexistence margins. The waveform properties that enable multi-gigabit broadband performance simultaneously amplify the consequences of even minor shielding imperfections. Without enhanced containment practices and cross-domain monitoring, these OFDM-specific characteristics convert what was once an episodic maintenance issue into a silent, systemic interference condition.

## Measurement, Detection, and Diagnostic Limitations

Accurate identification and remediation of interference between DOCSIS broadband systems and wireless utility networks are constrained by significant limitations in existing measurement and diagnostic practices. Many of the tools and procedures in use today were developed for earlier generations of cable technology and for interference models that assumed narrowband, intermittent impairments. In the context of DOCSIS 3.1 and DOCSIS 4.0, these assumptions no longer hold, creating blind spots that delay detection and obscure root causes.

Traditional cable plant maintenance relies heavily on swept-frequency testing and compliance-based leakage measurements. While effective for identifying gross shielding failures under controlled conditions, these methods often fail to capture the behavior of live OFDM transmissions. Sweeps are typically performed with test signals that do not replicate the high peak-to-average power ratios, wideband occupancy, or statistical characteristics of operational DOCSIS waveforms. As a result, a section of plant may appear compliant during testing while emitting significant broadband energy under normal traffic loading.

Ingress monitoring within DOCSIS networks presents similar challenges. Upstream noise is commonly measured as an averaged metric over relatively long time intervals. This averaging process can mask bursty or intermittent interference originating from wireless systems, even when such interference is sufficient to disrupt upstream scheduling or modulation profiles. In DOCSIS 4.0 environments, where upstream and downstream interactions are more tightly coupled, these hidden impairments can propagate across services without a clear indication of their source.

Wireless utility networks face their own diagnostic constraints. Field devices and collectors typically report link quality indicators such as RSSI, signal-to-noise ratio, or

packet error rate, but these metrics provide limited insight into the spectral composition or temporal behavior of interference. A broadband noise floor elevation caused by DOCSIS leakage may be indistinguishable from general environmental noise or self-interference within the mesh. Without fine-grained spectral visibility, operators may misattribute failures to coverage gaps, device faults, or network congestion rather than external interference.

The lack of synchronized visibility across domains further compounds the problem. Cable operators and utilities generally monitor their networks independently, using different tools, metrics, and operational timelines. There is rarely a mechanism to correlate a degradation in AMI performance with a specific section of cable plant or with changes in DOCSIS loading and profile configuration. This separation prevents the formation of a coherent interference narrative and prolongs resolution cycles.



Mobile and portable spectrum analysis can partially bridge this gap, but such approaches are labor-intensive and reactive. Drive testing or walk testing with real-time spectrum analyzers may identify localized leakage, yet these efforts are typically triggered only after significant service degradation has occurred. Moreover, the transient nature of some leakage phenomena means that emissions observed in the field may not be present during the

measurement window, leading to inconclusive results.

Regulatory measurement frameworks also lag behind technological reality. Leakage limits and testing methodologies were largely defined when cable systems operated below 1 GHz and relied on narrowband carriers. Applying these legacy criteria to wideband OFDM systems can result in nominal compliance despite meaningful real-world interference. This disconnect reduces the effectiveness of compliance testing as a predictive or preventative tool.

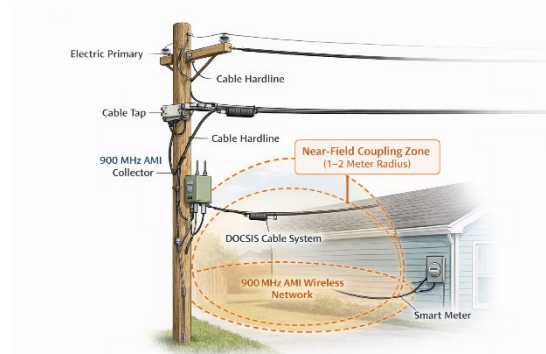
Collectively, these diagnostic limitations create a situation in which interference is often detected indirectly, through degraded service or operational impact, rather than directly at the physical layer. By the time symptoms become visible, the underlying conditions may have persisted for extended periods, affecting multiple systems and stakeholders. In such an environment, effective coexistence cannot rely solely on post hoc troubleshooting but requires updated measurement paradigms that reflect the spectral, temporal, and spatial realities of modern DOCSIS and wireless networks.

### Installation Practices, Physical Proximity, and Real-World Deployment Scenarios

The theoretical coexistence challenge between DOCSIS broadband systems and 900 MHz wireless networks becomes materially amplified in real-world installations. In practice, cable infrastructure and utility communication equipment are not isolated systems separated by engineered buffers; they are frequently co-located within the same physical structures, sharing poles, pedestals, conduits, and customer premises environments. The geometry, grounding practices, and installation quality of these deployments strongly influence the magnitude and persistence of interference.

In typical aerial deployments, hybrid fiber-coaxial hardline is installed on joint-use utility poles beneath electric primary and secondary conductors. Distribution taps are mounted on

the strand, with drop cables descending to customer premises. At the same time, smart meters are installed on exterior walls directly adjacent to service entrances, often within one to two meters of cable drops. In many cases, the cable drop and the electric service conduit enter the building envelope in close proximity, creating a compact cluster of RF-active and RF-sensitive devices.



Within this geometry, near-field coupling becomes a dominant factor. At distances below approximately one wavelength in the 900 MHz band, reactive electric and magnetic fields do not follow far-field propagation assumptions. Leakage from a tap housing, improperly torqued connector, or degraded drop cable can couple directly into a smart meter antenna or enclosure through field interaction rather than radiated free-space transmission. Even when emissions would appear negligible at a greater distance, close physical placement can produce localized desensitization of wireless receivers.

Pedestal-based underground installations present similar risks. In residential subdivisions, cable pedestals and electric service pedestals are often installed within a few feet of each other. Inside the cable pedestal, multiple taps and connectors serve nearby homes, while underground drop cables may be co-routed in shared trenches. If shielding integrity is compromised, the confined geometry of the pedestal enclosure can concentrate RF energy and increase the probability of coupling into adjacent wireless equipment or conductors.

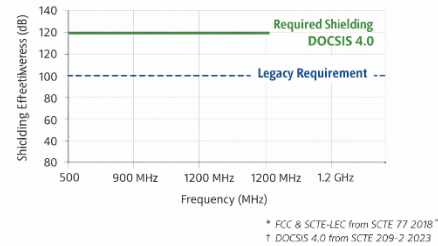
At the customer premises, additional complexity arises from bonding and grounding

practices. Cable shields are typically bonded to the building's grounding electrode system, as are electric service neutrals and meter enclosures. Differences in impedance, corrosion at bonding points, or improper installation can allow shield currents to develop potential differences that contribute to radiation. In some cases, common-mode currents flowing along drop cables can transform otherwise contained signals into unintended radiators.

Collector installations for wireless mesh networks further illustrate the proximity challenge. Pole-mounted collectors are frequently installed at heights similar to cable strand, sometimes on the same pole and within a few meters horizontally. When a collector antenna operates near a section of compromised hardline, both ingress and egress effects are intensified. The collector, designed to aggregate traffic from hundreds or thousands of endpoints, becomes a focal point of interference impact, magnifying the operational consequences of a localized leakage defect.

Indoor installations also merit consideration. In multi-dwelling units and commercial buildings, coaxial distribution may run through risers and telecommunications closets that are physically adjacent to electric panels and smart metering equipment. Structural materials, metallic conduits, and cable trays can create reflective and resonant environments that alter field distribution. In such confined spaces, even small imperfections in shielding can produce disproportionate interference effects.

Installation quality is therefore a critical determinant of coexistence performance. Connector torque, proper compression of fittings, selection of quad-shielded drop cable, and maintenance of corrosion-resistant bonding all influence shielding effectiveness. As DOCSIS systems migrate to higher frequencies and greater spectral density under DOCSIS 3.1 and 4.0, the tolerance for installation variability decreases. Practices that were adequate under lower-frequency, narrowband systems may no longer provide sufficient containment.



Ultimately, coexistence between broadband and wireless utility networks is shaped not only by spectrum allocation and signal power, but by the physical realities of shared infrastructure. The proximity of cable components to smart meters, collectors, and electric service equipment creates coupling pathways that cannot be ignored in design or maintenance strategies. Addressing interference at this level requires attention to installation standards, field training, and cross-industry coordination in the environments where these systems physically intersect.

### Escalating Shielding Requirements in DOCSIS 3.1 and 4.0 Environments

The evolution of DOCSIS technology has fundamentally altered the electromagnetic containment requirements of the cable plant. While shielding effectiveness was always an important parameter in hybrid fiber-coaxial design, the transition to wideband OFDM operation, expanded spectrum, and higher aggregate RF energy has raised the minimum acceptable shielding threshold beyond legacy assumptions. In practical terms, shielding performance that was once considered adequate under earlier DOCSIS generations may no longer provide sufficient isolation in DOCSIS 3.1 and DOCSIS 4.0 deployments.

Historically, cable systems were engineered with shielding effectiveness sufficient to prevent visible interference with broadcast services and to comply with regulatory leakage limits defined primarily below 1 GHz. Narrowband QAM carriers, discrete channel spacing, and lower total RF density meant that small imperfections in connectors or shielding braid coverage produced localized and often

tolerable leakage. The spectral signature of these emissions was predictable and limited in bandwidth, reducing their impact on adjacent systems.

DOCSIS 3.1 changed this balance by introducing continuous, wideband OFDM blocks that occupy large portions of the downstream spectrum, including the 902–928 MHz band. The composite OFDM waveform distributes energy across thousands of subcarriers and maintains a high duty cycle. Even when average power remains within design specifications, the statistical peaks inherent in OFDM drive components closer to nonlinear regions. As a result, any imperfection in shielding becomes excited by a broadband signal with significant instantaneous amplitude, increasing the probability of radiation.

DOCSIS 4.0 further intensifies this condition by extending usable spectrum to 1.8 GHz and increasing symmetry between upstream and downstream transmission. Higher frequencies are inherently more sensitive to shielding discontinuities because smaller physical gaps become electrically significant. A defect that represents a negligible fraction of a wavelength at lower frequencies may approach a resonant dimension at higher frequencies, increasing radiation efficiency. In addition, the cumulative RF energy present within the plant increases as more spectrum is activated, raising the potential leakage power available at any defect point.

Another factor driving elevated shielding requirements is the asymmetry between cable signal power and wireless receiver sensitivity. As previously described, the power differential between a cable amplifier launch level and a wireless receiver operating near the thermal noise floor can exceed 150 dB. To prevent meaningful interference under such conditions, shielding effectiveness must be sufficiently high to attenuate leakage to levels that fall well below the desensitization threshold of nearby wireless devices. In practical terms, these pushes shielding performance toward or beyond 100 dB in critical frequency ranges, particularly around 900 MHz.

The nonlinear behavior of active components further increases the burden on shielding. When OFDM signals with high peak-to-average ratios excite amplifiers or passives operating near compression, intermodulation products and spectral regrowth extend beyond nominal channel boundaries. Shielding must therefore contain not only the intended carriers but also distortion products that may occupy adjacent frequencies. This broadens the effective containment requirement beyond the primary DOCSIS allocation.

Installation variability compounds the challenge. Shielding effectiveness is not determined solely by cable construction but by the integrity of connectors, grounding continuity, corrosion resistance, and mechanical stability over time. Thermal cycling, vibration on aerial plant, and environmental exposure degrade performance gradually. Under earlier DOCSIS generations, such degradation might have resulted in marginal leakage without significant operational consequence. In DOCSIS 3.1 and 4.0 environments, the same degradation can elevate emissions sufficiently to disrupt adjacent wireless systems.

Regulatory frameworks have not fully adapted to these heightened requirements. Leakage limits were originally established in an era of lower frequency ceilings and narrowband operation. Applying those same numeric thresholds to modern wideband systems does not necessarily guarantee coexistence with sensitive wireless infrastructure. The metric of regulatory compliance is therefore no longer synonymous with operational compatibility.

For these reasons, shielding requirements in modern cable networks exceed historical norms not by arbitrary tightening of standards, but by necessity. The combination of expanded spectrum, higher RF density, OFDM waveform characteristics, and extreme power asymmetry demands containment performance that reflects contemporary electromagnetic realities. Without such enhanced shielding integrity, the probability of persistent and spatially correlated interference increases substantially, particularly in environments

---

where cable and wireless utility infrastructure are co-located.

### **Impact on Wireless Utility Networks**

The technical coexistence challenges described in the preceding sections ultimately manifest not only as RF impairments, but as operational and systemic risks affecting both broadband service delivery and critical utility infrastructure. When DOCSIS 3.1 and DOCSIS 4.0 systems interact with wireless utility networks in shared spectral and physical environments, the consequences extend beyond link-layer degradation into domains of reliability, safety, and regulatory exposure.

For electric utilities, wireless communications in the 902–928 MHz band frequently support advanced metering infrastructure, distribution automation, capacitor control, voltage regulation monitoring, and outage management systems. These applications rely on predictable latency, high availability, and resilient mesh behavior under adverse conditions. Persistent broadband interference originating from cable leakage elevates the local noise floor and reduces effective receiver sensitivity. The resulting increase in packet loss and retransmissions can introduce variable latency into systems that were designed for near-real-time situational awareness.

Outage detection provides a clear example of systemic sensitivity. Many AMI networks depend on immediate “last gasp” notifications from meters when service is interrupted. If interference conditions reduce the probability of successful packet transmission at the moment of outage, the utility may experience delayed or incomplete awareness of the event. This delay can cascade into slower crew dispatch, reduced fault isolation efficiency, and prolonged restoration times. In high-density urban environments where cable and electric infrastructure are tightly co-located, such risks are amplified.

Distribution automation functions are similarly vulnerable. Control commands for reclosers, switches, and voltage control devices require reliable communication paths. Elevated

interference levels that force mesh rerouting or increase hop counts can introduce timing variability that degrades coordination. In extreme cases, communication loss may require fallback to less optimal operational modes, reducing the effectiveness of automation investments.

From the cable operator’s perspective, ingress of wireless systems can degrade upstream service quality for large subscriber groups served by a common node. Even intermittent ingress events may trigger adaptive modulation profile changes, increased error correction overhead, or reduced throughput. In DOCSIS 4.0 environments, where upstream and downstream spectral boundaries are more fluid and capacity is tightly managed, noise-induced instability can affect service level agreements and customer experience metrics.

A critical dimension of systemic risk lies in asymmetry of visibility and accountability. Cable systems, equipped with robust forward error correction and adaptive modulation, may continue to operate within acceptable performance margins while adjacent wireless systems experience severe degradation. This masking effect delays detection of shielding defects and shifts operational consequences onto the utility domain. Conversely, when ingress affects cable upstream performance, the source may be attributed to generalized noise rather than recognized as a cross-domain interaction.

The reputational and regulatory implications of such interference cannot be overlooked. Utilities are often subject to strict reliability standards and public service obligations. Communication failures that contribute to extended outages or delayed response may attract scrutiny, even when the root cause lies outside the utility’s direct control. Similarly, cable operators are bound by leakage compliance requirements and service quality expectations. Persistent coexistence conflicts create exposure for both parties in regulatory and legal contexts.

At a broader scale, the issue represents a convergence of two critical infrastructures

whose design assumptions were developed independently. As broadband capacity continues to expand and utilities modernize grid communications, the density of RF energy in shared environments will increase. Without coordinated mitigation strategies and updated technical standards, localized interference conditions may accumulate into chronic, geographically distributed reliability challenges.

In this context, coexistence must be framed not simply as a matter of RF compatibility, but as a component of infrastructure resilience. The interdependence of communication systems and power delivery means that failures in one domain can propagate into the other. Recognizing and addressing these systemic implications is essential to maintaining both broadband service integrity and grid operational reliability in increasingly complex electromagnetic environments.

### **Measurement Strategies and Instrumentation for Modern Coexistence Environments**

Traditional narrowband leakage detection and swept testing methodologies are insufficient in wideband OFDM environments. Compliance measurements may not reflect real-world broadband spectral density under live loading conditions.

Effective coexistence assessment requires real-time spectrum analysis with high dynamic range, near-field probing for localized leakage detection, synchronized GPS-referenced drive testing for spatial mapping, and cross-correlation of DOCSIS metrics with wireless network performance logs.

Modern instrumentation platforms capable of wide instantaneous bandwidth observation are essential to characterize spectral regrowth, transient emissions, and spatial coupling pathways. Without integrated, cross-domain measurement strategies, coexistence challenges remain reactive rather than predictive.

### **Regulatory and Standards Misalignment**

The coexistence challenges between DOCSIS broadband systems and 900 MHz wireless utility networks are compounded by a regulatory framework that was largely developed under earlier technological assumptions. Leakage limits, compliance methodologies, and spectrum allocation rules were established when cable systems operated at lower frequencies, used narrowband modulation schemes, and carried significantly less aggregate RF energy. As DOCSIS technology has evolved, the regulatory environment has not fully adapted to reflect the new spectral and operational realities.

Cable systems are typically regulated under leakage performance requirements intended to prevent harmful interference to licensed over-the-air services, particularly in aeronautical bands. These limits were defined in an era when downstream operation generally remained below 750 MHz or 860 MHz. With DOCSIS 3.1 extending downstream spectrum to 1.2 GHz and DOCSIS 4.0 extending to 1.8 GHz, substantial portions of active cable spectrum now lie outside the frequency ranges that originally drove leakage policy design. While compliance obligations still apply, the measurement methodologies and threshold definitions were not calibrated for wideband OFDM emissions or for the protection of low-power, unlicensed critical infrastructure systems operating within overlapping bands.

Wireless utility networks operating in the 902–928 MHz ISM band are governed by unlicensed spectrum rules. These frameworks assume shared, opportunistic use and impose power and emission constraints on transmitters, but they do not guarantee protection from other lawful emitters. As a result, utilities deploying AMI and field area networks bear operational responsibility without having formal protection rights against broadband leakage that may meet regulatory thresholds yet still degrade network performance. This creates an asymmetry in accountability, where one infrastructure may experience operational harm without a clear regulatory recourse.

Standards bodies in both domains have historically operated independently. Cable

---

specifications focus on throughput, spectral efficiency, and plant containment, while wireless utility standards emphasize mesh robustness, link budgets, and interference tolerance within stochastic environments. Neither framework was explicitly designed to address persistent, high-power broadband emissions from adjacent contained systems operating within shared physical corridors. The absence of harmonized coexistence criteria leaves a technical and governance gap.

Measurement standards also reflect this misalignment. Traditional leakage detection practices are often based on narrowband detection at specific frequencies rather than broadband spectral density analysis. Compliance may therefore be demonstrated even when aggregate wideband emissions materially elevate the noise floor experienced by nearby wireless receivers. Conversely, wireless performance degradation metrics are typically evaluated within the utility's own network context, without structured mechanisms to correlate impairments with adjacent cable plant conditions.

As infrastructure modernization accelerates, this regulatory gap becomes more consequential. Public utility commissions, telecommunications regulators, and standards organizations increasingly prioritize resilience, cybersecurity, and service continuity. Interference that affects outage detection, grid automation, or broadband service reliability intersects with broader policy objectives. Yet current rules do not clearly assign responsibility for managing cross-domain electromagnetic coupling in shared environments.

Addressing this misalignment will likely require coordinated updates to standards and best practices. This may include revised leakage measurement methodologies that reflect wideband emissions, enhanced shielding performance specifications for extended spectrum deployments, and formal coexistence guidelines in areas of dense infrastructure co-location. Regulatory recognition of the operational sensitivity of utility communications could also inform

future policy discussions around shared spectrum governance.

Ultimately, the challenge is not one of regulatory non-compliance but of regulatory obsolescence relative to technological evolution. DOCSIS 3.1 and 4.0 systems operate in a spectral and operational regime that did not exist when many containment and coexistence assumptions were codified. Bridging this gap will require collaboration between cable operators, utilities, standards bodies, and regulators to ensure that rules governing electromagnetic containment align with the realities of modern broadband and critical infrastructure communications.

### **Mitigation Framework and Engineering Controls for Sustainable Coexistence**

Achieving sustainable coexistence between DOCSIS 3.1 and DOCSIS 4.0 broadband systems and 900 MHz wireless utility networks requires a layered mitigation framework that addresses physical containment, network architecture, operational coordination, and long-term governance. Because the interference mechanisms are both bidirectional and systemic, effective mitigation cannot rely on isolated corrective actions. Instead, it must integrate engineering controls across both infrastructures.

At the physical layer, shielding integrity remains the primary containment mechanism within the cable plant. Enhanced shielding effectiveness through the use of quad-shielded drop cables, high-quality compression connectors, corrosion-resistant bonding hardware, and rigorous torque control significantly reduces the probability of egress and ingress. In modern DOCSIS environments, maintenance practices must evolve from compliance-driven spot checks to proactive, condition-based monitoring. This includes periodic real-time spectral audits under live OFDM loading conditions rather than reliance solely on swept testing or static leakage thresholds. As frequency utilization extends toward 1.8 GHz under DOCSIS 4.0, installation tolerances and component specifications must

reflect the higher sensitivity of the system to small discontinuities.

Strategic frequency management also represents viable engineering control in high-risk zones. DOCSIS profile management allows selective notching or power shaping within specific frequency segments. In areas where cable infrastructure and critical wireless utility installations are tightly co-located, deliberate spectral notching of the 902–928 MHz region may provide a targeted mitigation approach. While this may marginally reduce available broadband capacity, it can materially improve coexistence stability in geographically constrained environments.

From the wireless utility perspective, architectural resilience can reduce susceptibility to elevated noise floors. Hybrid backhaul models that combine mesh networking with fiber or private LTE links reduce hop counts and limit the propagation of interference-induced instability. Antenna selection, polarization control, and physical placement strategies can also mitigate near-field coupling effects. Where feasible, repositioning collectors or modifying antenna orientation relative to cable hardline can reduce exposure to localized leakage sources.

Cross-domain coordination between cable operators and utilities is an essential component of any sustainable solution. Shared incident reporting mechanisms, coordinated field investigations, and defined response timelines for leakage remediation help reduce prolonged interference conditions. In regions with dense co-location, joint planning during infrastructure upgrades or expansions can prevent future conflicts. Establishing formal service-level agreements for interference resolution recognizes the interdependent nature of these systems and aligns operational incentives.

Measurement modernization is equally critical to mitigation. Continuous or periodic broadband spectral monitoring in known overlap zones enables early detection of elevated emissions before they translate into systemic wireless degradation. Correlating

DOCSIS performance metrics with wireless network analytics allows faster root-cause identification. This integrated visibility transforms interference management from reactive troubleshooting into proactive risk control.

Finally, long-term coexistence requires alignment of standards and regulatory frameworks with current technological realities. Leakage limits, shielding specifications, and compliance methodologies must reflect the wideband, high-density nature of DOCSIS 3.1 and 4.0 signals. Collaboration between standards bodies, regulators, cable operators, and utilities can ensure that containment expectations are calibrated to the operational sensitivity of adjacent critical infrastructure.

Sustainable coexistence therefore depends on recognizing that the cable plant is no longer an isolated transmission medium and that wireless utility networks are not operating in a purely stochastic noise environment. Through enhanced physical containment, adaptive spectrum management, resilient network design, coordinated operations, and updated measurement practices, the risks associated with spectral and spatial overlap can be materially reduced.

### **Conclusion: Strategic Outlook and Industry Opportunity**

The coexistence challenge between DOCSIS 3.1/4.0 broadband systems and 900 MHz wireless utility networks is structural rather than incidental. DOCSIS architecture assumes electromagnetic containment. Wireless AMI systems assume stochastic shared-spectrum conditions. When these assumptions intersect in shared physical space, interference becomes predictable.

The solution is not spectrum avoidance but engineered coexistence. Enhanced shielding integrity, adaptive spectrum management, cross-domain measurement visibility, and coordinated operational frameworks are required.

---

As broadband density increases and utilities modernize grid communications, the need for independent, technically rigorous coexistence analysis will grow. Organizations capable of bridging cable engineering, wireless network

design, and advanced RF analytics are positioned to support utilities, MSOs, regulators, and infrastructure investors in navigating this new electromagnetic landscape.

---

Paulo Sigrist is a senior management professional with over 30 years of experience in telecommunications and mobility infrastructure, specializing in mission-critical systems and complex infrastructure projects.